



DENIM

Active Nature

自然探索

< For Sweater, Vol. 1 >

GUILIN VERTEX GREENTECH LIMITED

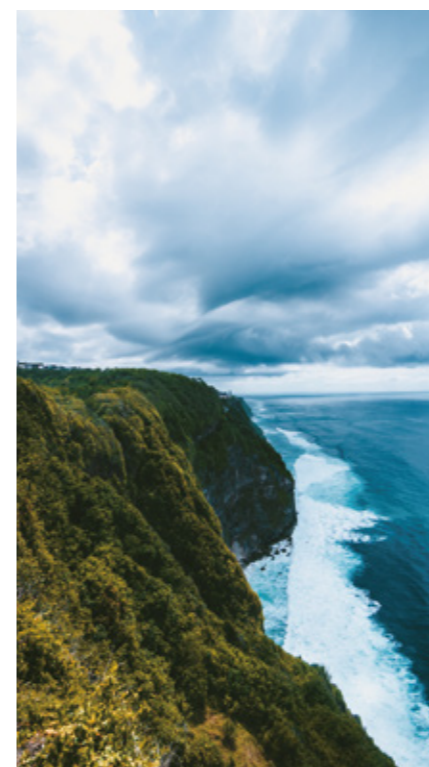
FANCY BLUES

创新蓝调美学, 致敬DENIM风尚

Originated from continuous exploration and consistent aspiration, the Vertex Greentech Denim Heather Yarn retains its incessantly innovative ideas and natural features, creating through sophisticated top-dyed spinning technology, without any chemical dyeing or heavy washing, in such way, this heather yarn having a "washed" effect through more sustainable and innovative processes has no difference from regular cotton yarn in its color fastness.

Vertex Greentech Denim Heather Yarn takes on a more primitive look by a unique and natural effect, presenting the sustainability and lifestyle we always devoted to. As time goes, we unlock new visual with timeless blues to unleash color splendor of innovative technology and explore the appealing "green" fascination, which makes products elevate beyond 源于对色纺工艺的不懈探索与追求, 大行环创仿牛仔色纺纱系列延续了一贯的创新精华与自然格调, 同时融入了独具特色的环保元素, 为经久不息的牛仔风注入隽永的时尚魅力与深刻内涵。通过精湛的纤维染色技术和纯熟的色纺工艺, 无需借助化学染洗, 以更环保创新的方式为产品打造极致的牛仔水洗效果, 其色牢度与常规纯棉织物无异。

大行环创仿牛仔色纺纱, 以更独特自然的风格, 呈现出充满原始又生机勃勃的活力, 体现了一种可持续的环保理念与生活方式。在时间的流转中, 以书写蓝调美学唤醒视觉新意, 感受创新工艺带来的色彩张力, 探寻独具一格的“绿色”美, 致敬经典的丹宁风尚。

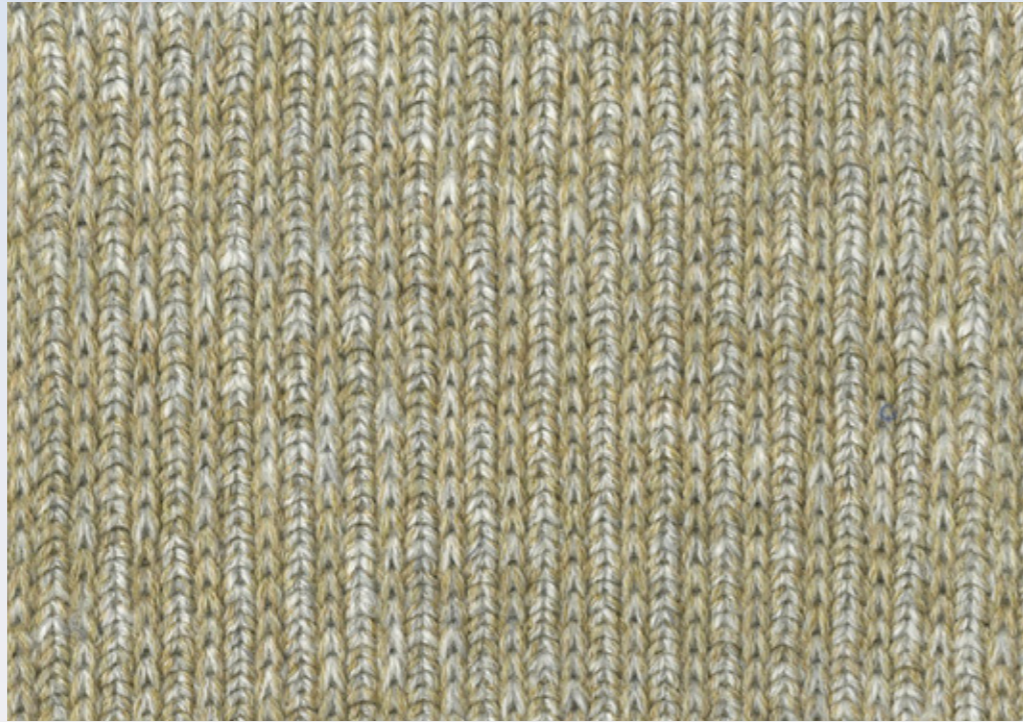


ACTIVE NATURE 自然探索



Lush tussocks, undulating hills and rocky shoreline, these natural characters bringing healing power from the oceanic island inspire us to follow our inner heart. Day in and day out, taking inspiration from the nature, we've crafted new visual yarn combined with fabric structures of stretch rib, breathable hollow and warm double jacquard, which take inspiration from the features of shells, stones and twining seaweeds, adding a

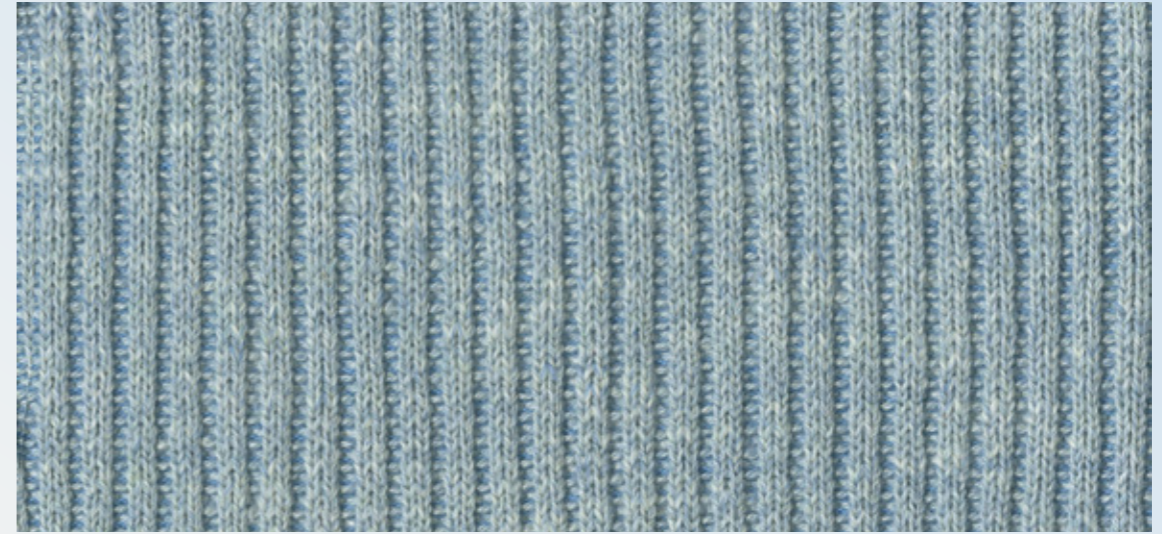
密丛, 山脉及海岸线等天然地貌的肌理, 无不散发着自然海岛与生俱来的治愈力, 激发人们探求内心的本真。日升月落, 感受自然气息, 从贝壳、石像, 以及海藻的交织中吸取灵感, 将大行环创独特的创新视觉效果纱线与弹力坑条、透气镂空、保暖的双面提花等织物结构相融合, 为典藏设计注入时尚运动格调。



Product Name(产品名称): Denim heather yarn, Rain Denim heather yarn
Content(成分): 100% Cotton(棉)
Yarn Count(纱支): 32s/2, 20s/2
Yarn Lot(纱批): H222-104379, H222-104412-107
Color Code(色号): ES42883D, ES54830D
Gauge(针种): 9gg, 4ends
Art NO.(花型编码): 210149



Product Name(产品名称): Rain Denim Heather Yarn, Uneven Budding Heather Yarn
Content(成分): 100% Cotton(棉)
Yarn Count(纱支): 20s/2
Yarn Lot(纱批): H222-104380-107, H120-Z100200-11
Color Code(色号): ES22283D, ES11808D
Gauge(针种): 12gg, 1end
Art NO.(花型编码): 210156



Product Name(产品名称): Rain Denim Heather Yarn, Cashmere-like Cotton Solid Yarn
Content(成分): 100% Cotton(棉)
Yarn Count(纱支): 20s/2, 32s/2
Yarn Lot(纱批): H222-104413-107, N21020108
Color Code(色号): ES14808D, 10275BLYL01
Gauge(针种): 12gg, 2ends
Art NO.(花型编码): 210182



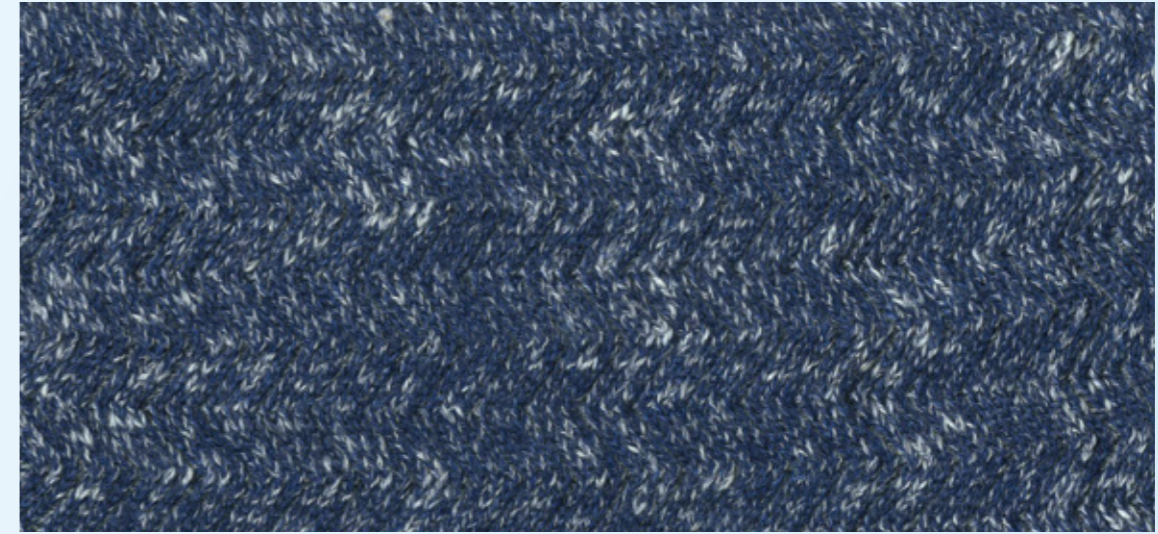
Product Name(产品名称): Denim Heather Yarn
Content(成分): 100% Cotton(棉)
Yarn Count(纱支): 30s/2
Yarn Lot(纱批): H222-100078, H222-104066
Color Code(色号): ES13913D, ES-B1314D
Gauge(针种): 14gg, 1end
Art NO.(花型编码): 210158



Product Name(产品名称): Denim Heather Yarn, Rain Denim Heather Yarn
Content(成分): 100% Cotton(棉)
Yarn Count(纱支): 30s/2, 20s/2
Yarn Lot(纱批): H222-104428, H222-104411-107
Color Code(色号): ES13040D, ES12544D
Gauge(针种): 12gg, 2ends
Art NO.(花型编码): 210155



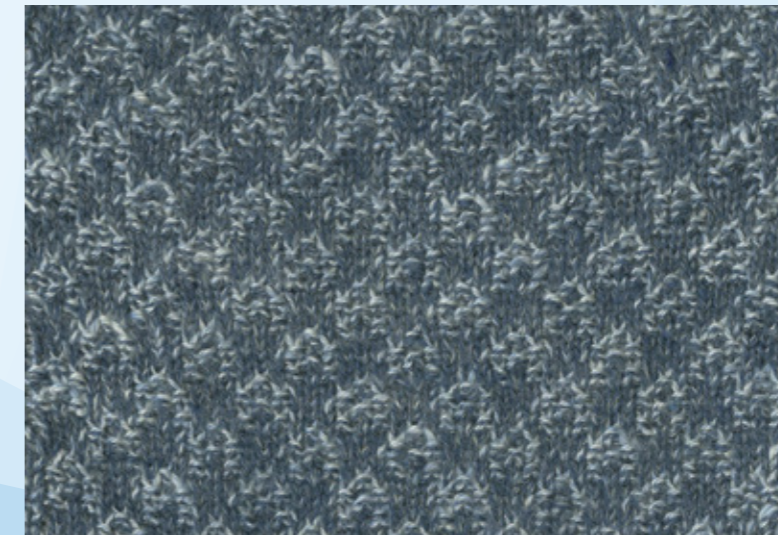
Product Name(产品名称): Denim Heather Yarn
 Content(成分): 100% Cotton(棉)
 Yarn Count(纱支): 30s/2
 Yarn Lot(纱批): H222-104395, H222-101336
 Color Code(色号): ES11616D, ES12566D
 Gauge(针种): 12gg, 2ends
 Art NO.(花型编码): 210185



Product Name(产品名称): Denim Heather Yarn, Rain Denim Heather Yarn
 Content(成分): 100% Cotton(棉)
 Yarn Count(纱支): 30s/2, 20s/2
 Yarn Lot(纱批): H222-104428, H222-104411-107
 Color Code(色号): ES13040D, ES12544D
 Gauge(针种): 12gg, 2ends
 Art NO.(花型编码): 210183



Product Name(产品名称): Rain Denim Heather Yarn
 Content(成分): 100% Cotton(棉)
 Yarn Count(纱支): 20s/2
 Yarn Lot(纱批): H221-110330-11, H222-104398-107
 Color Code(色号): ES53996D, ES-B1398D
 Gauge(针种): 7gg, 4ends
 Art NO.(花型编码): 210147



Product Name(产品名称): Rain Denim Heather Yarn
 Content(成分): 100% Cotton(棉)
 Yarn Count(纱支): 20s/2
 Yarn Lot(纱批): H121-109024-107, H222-104413-107
 Color Code(色号): ES14804D, ES14808D
 Gauge(针种): 9gg, 2ends
 Art NO.(花型编码): 210151



Product Name(产品名称): Denim Heather Yarn
 Content(成分): 100% Cotton(棉)
 Yarn Count(纱支): 30s/2
 Yarn Lot(纱批): H222-104428, H222-104395
 Color Code(色号): ES13040D, ES11616D
 Gauge(针种): 12gg, 2ends
 Art NO.(花型编码): 210184



Product Name(产品名称): Rain Denim Heather Yarn
 Content(成分): 100% Cotton(棉)
 Yarn Count(纱支): 20s/2
 Yarn Lot(纱批): H222-104411-107, H222-104412-107
 Color Code(色号): ES12544D, ES54830D
 Gauge(针种): 12gg, 1end
 Art NO.(花型编码): 210157