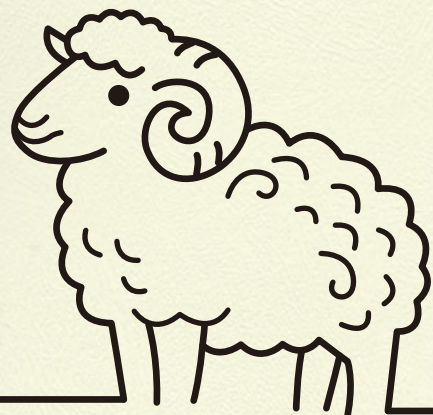




Prestige Merino Cashmere 90/10

云融·尚绒纱

[Vol.2]



GUILIN VERTEX GREENTECH LIMITED

PRODUCT INFORMATION | 产品信息

Product Name 产品名称	Composition 成分	Yarn Counts 纱支	Color Offering 可提供的颜色
Prestige Merino Cashmere 90/10 云融·尚绒纱	90% Wool 羊毛 10% Cashmere 羊绒	NE 英支: 40s/2 NM 公支: 2/68	Heather, Solid Colors 色纺色、净色

This product blends the warmth and fluffiness of Australia's finest Merino wool with the smooth, silky, and resilient texture of carefully selected cashmere. These two materials complement each other perfectly, knitting into a fabric that feels like the light clouds in the sky, with a delicate and soft touch, reminiscent of the gentle warmth of winter sunshine, offering both comfort and warmth. Embodied with exceptional quality and a touch of high-end luxury, it exudes an air of noble distinction and elegance.

云融·尚绒纱融合了澳大利亚上乘美利奴羊毛的温暖蓬松与精选羊绒的滑糯绵弹。两者相辅相成，编织出的织物若天际轻云，触感细腻与柔软，又如冬日和煦阳光，温暖舒适。蕴含着非凡的质感与高端奢华的韵味，尽显尊贵不凡。



Breathable
舒适透气



Persistent Thermal Insulation
保持温暖



Soft Handfeel
柔软手感



Light and Fluffy
轻盈蓬松

Garment Care Label Recommendations 建议成衣洗水标

Hand Wash Cold 冷水手洗	Do Not Bleach 不可漂白	Do Not Tumble Dry 不可转笼烘干	Iron on Low Heat 低温熨烫	Dry Clean if Preferred 可干洗

Other Recommendation 其它建议:

- Dry Flat in Shade 于阴凉处平铺晾干

Remarks 备注

LAB DIP AVAILABILITY 小样提供	Lap dip available for customized top dye heather and yarn dye solid colors 小样可提供客人指定的色纺色和净色
WEIGHT ALLOWANCE 重量偏差	All yarns are subject to (+/-) 2% moisture regain allowance in weight 产品在公定回潮率下的重量存在(+/-)2%的偏差
FIBER CONTENT TOLERANCE 成分波动	According to AATCC 20A-2000 method, where two or more fibers are in the product, a tolerance of (+/-) 3% is allowed 根据纤维定量分析AATCC 20A-2000测试, 当产品含有两种或以上的成分, 允许有(+/-)3%的波动

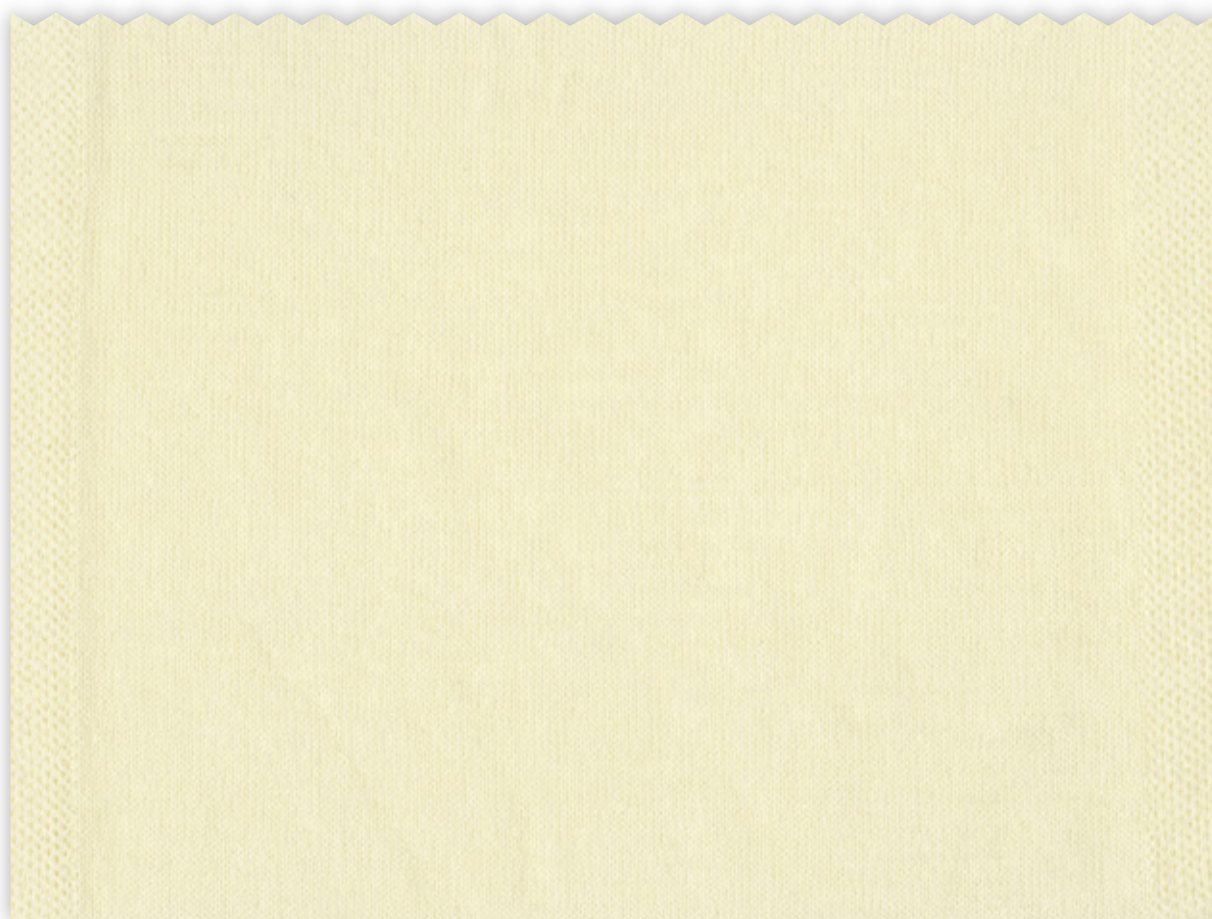


ISO9001
ISO14001



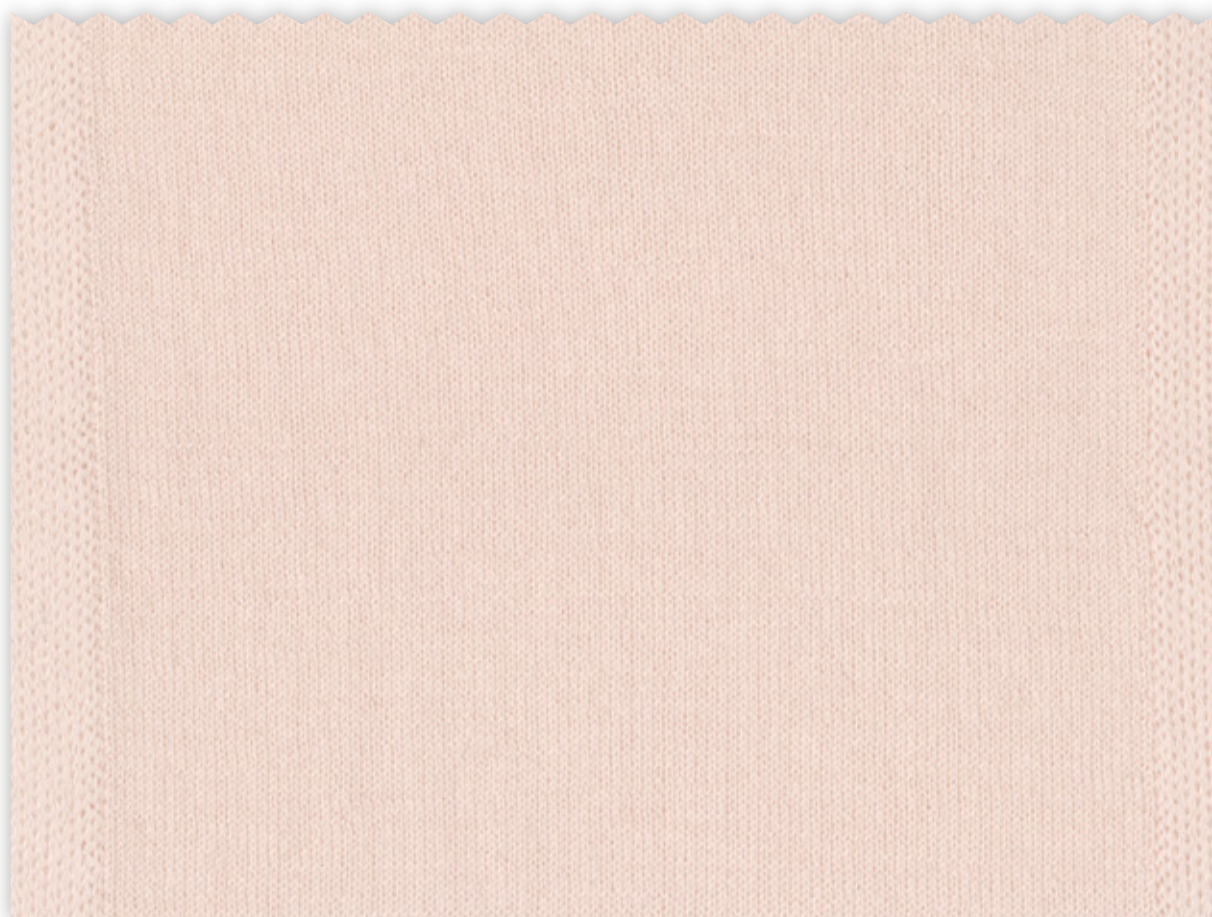
RWS Wool Convertible
可换成RWS认证羊毛





Yarn Count 纱支: 2/68 Nm
Color Code 色号: 0898WDYWYL01

Yarn Lot 纱批: N25110099
Gauge 针种: 18gg, 1end



Yarn Count 纱支: 2/68 Nm
Color Code 色号: 0866WDPKYL01

Yarn Lot 纱批: N25010198
Gauge 针种: 14gg, 2ends

V1

V2

V3

A



Color Code 色号: 1423WDBGYL01
Yarn Lot 纱批: N25070175



Color Code 色号: 0866WDPKYL01
Yarn Lot 纱批: N25010198



Color Code 色号: VE6CW-BC5018-J-S
Yarn Lot 纱批: HL225-110912M

B



Color Code 色号: 0898WDYWYL01
Yarn Lot 纱批: N25110099



Color Code 色号: 1522WDKKYL01
Yarn Lot 纱批: N25110102



Color Code 色号: VE6CW515043-J-S
Yarn Lot 纱批: HL225-111008M

C



Color Code 色号: 2234WDGNYL01
Yarn Lot 纱批: N25110100



Color Code 色号: 1055WDKKYL01
Yarn Lot 纱批: N25010196



Color Code 色号: VE6CW-BC65-J-S
Yarn Lot 纱批: HL225-111050M

D



Color Code 色号: 0635WDVLYL01
Yarn Lot 纱批: N25110101



Color Code 色号: 1387WDRDYD01
Yarn Lot 纱批: N25010246

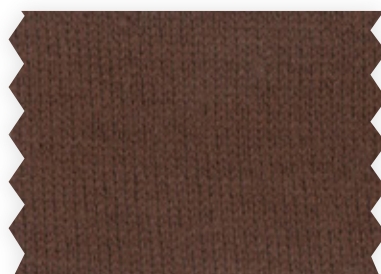


Color Code 色号: 2415WDNYD01
Yarn Lot 纱批: N25110098

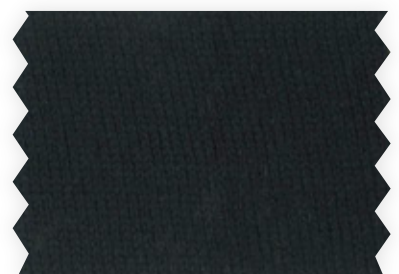
E



Color Code 色号: 2267WDBLYL01
Yarn Lot 纱批: N25110455



Color Code 色号: 1053WDBRYD01
Yarn Lot 纱批: N25090339



Color Code 色号: 1066WDBKYD01
Yarn Lot 纱批: N25010018

