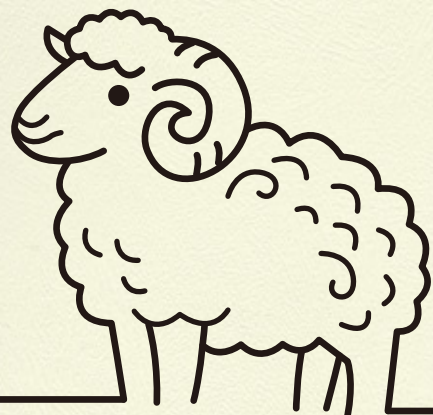


Ramie Supreme Wool PT

苧麻·皓煦纱



PRODUCT INFORMATION | 产品信息

Product Name 产品名称	Composition 成分	Yarn Counts 纱支	Color Offering 可提供的颜色
Ramie Supreme Wool PT 苧麻·皓煦纱	58% Wool 羊毛 42% Ramie 苧麻	NE 英支: 35s/3 NM 公支: 3/59	Solid Colors 净色

Utilizing high-quality ramie with relatively long fibers, it naturally exhibits a soft, silky luster and causes minimal irritation when in contact with the skin. The incorporation of a high proportion of wool further optimizes the yarn's moisture management, helping to maintain the skin fresh and dry. Through a unique crafting design, the distinctive properties of both fibers are fully integrated, allowing the yarn to fully demonstrate its performance while presenting a rich and naturally layered texture.

采用纤维较长的优质苧麻,天然带有丝质般的柔和光泽,与肌肤接触刺痒感弱。高比例羊毛,进一步优化了纱线的吸湿排汗性能,让肌肤保持相对干爽。独特的工艺设计,将两种纤维的特性充分融合,让纱线性能得以充分发挥且呈现出丰富自然的层次感。



Sustainable Premium Ramie
环保优质苧麻



Good Luster
光泽柔亮



Breathable
舒适透气



Soft Yet Structured
柔软不失骨感

Garment Care Label Recommendations 建议成衣洗水标

Machine Wash Cold 30°C或冷水机洗	Do Not Bleach 不可漂白	Do Not Tumble Dry 不可转笼烘干	Iron on Low Heat 低温熨烫	Dry Clean if Preferred 可干洗

Other Recommendation 其它建议:

- Dry Flat in Shade 于阴凉处平铺晾干
- Wash with Mesh Bag 使用洗衣袋洗涤
- Use program with wool symbol on washing machine 请使用洗衣机上羊毛标志的洗涤程序

Remarks 备注

LAB DIP AVAILABILITY 小样提供	Lap dip available for customized yarn dye solid colors 小样可提供客人指定的净色
WEIGHT ALLOWANCE 重量偏差	All yarns are subject to (+/-) 2% moisture regain allowance in weight 产品在公定回潮率下的重量存在(+/-)2%的偏差
FIBER CONTENT TOLERANCE 成分波动	According to AATCC 20A-2000 method, where two or more fibers are in the product, a tolerance of (+/-) 3% is allowed 根据纤维定量分析AATCC 20A-2000测试,当产品含有两种或以上的成分,允许有(+/-)3%的波动
COLOR TOLERANCE 颜色偏差	Accept yarn appearance and lot difference as natural characteristics 纱线外观及批次差异源于苧麻纤维的天然特性



ISO9001
ISO14001



RWS Wool Convertible
可换成RWS认证羊毛





Yarn Count 纱支: 3/59 Nm
Color Code 色号: 1551WLKKYL01

Yarn Lot 纱批: N25120030
Gauge 针种: 14gg, 1end



Yarn Count 纱支: 3/59 Nm
Color Code 色号: 2414BN-3

Yarn Lot 纱批: N25120226
Gauge 针种: 9gg, 2ends

V1

V2

V3

A



Color Code 色号: 2131WLBGYL02
Yarn Lot 纱批: N25111045



Color Code 色号: 1551WLKKYL01
Yarn Lot 纱批: N25120030



Color Code 色号: 2413BN-3
Yarn Lot 纱批: N25120224

B



Color Code 色号: 1121WLPKYL01
Yarn Lot 纱批: N25120027



Color Code 色号: 1552WLKKYL01
Yarn Lot 纱批: N25120029



Color Code 色号: 2418BN-3
Yarn Lot 纱批: N25120232

C



Color Code 色号: 0908WLYWYL01
Yarn Lot 纱批: N25120026



Color Code 色号: 2264WLGNYM01
Yarn Lot 纱批: N25120034



Color Code 色号: 2414BN-3
Yarn Lot 纱批: N25120226

D



Color Code 色号: 0334WLTQYL01
Yarn Lot 纱批: N25120033



Color Code 色号: 2039WLNYYD02
Yarn Lot 纱批: N25120031

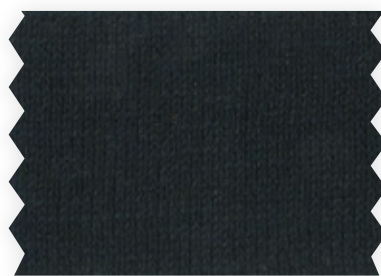


Color Code 色号: 2415BN-3
Yarn Lot 纱批: N25120228

E



Color Code 色号: 2301WLBLYL01
Yarn Lot 纱批: N25120028



Color Code 色号: 1557WLBKYD01
Yarn Lot 纱批: N25120032



Color Code 色号: 2416BN-3
Yarn Lot 纱批: N25120230

