



Star Clouds Linen Heather
亚麻·星云纱

GUILIN VERTEX GREENTECH LIMITED

PRODUCT INFORMATION | 产品信息

| Product Name 产品名称 | Composition 成分 | Yarn Counts 纱支 | Color Offering 可提供的颜色 |
|-------------------------------------|----------------------------------|-------------------|--------------------------|
| Star Clouds Linen Heather 亚麻·星云纱 | 70% Polyester 涤纶 30% Linen 亚麻 | NE 16s/2 | Heather Colors 色纺色 |

This product is crafted from natural French dew-retted linen. Its unique texture is ingeniously enhanced by the exquisite color technique over the base hue, resembling stars scattered across the night sky. They interweave to create a visual effect as unpredictable and vibrant as a nebula, making it a refreshing, breathable, and lively choice.

此产品选用天然法国雨露亚麻，结合色彩工艺将独特肌理巧妙呈现于基底色之上，宛如夜空中散落的星辰，交织出如星云般变幻莫测、绚丽多彩的视觉效果，是清爽透气而缤纷灵动的选择。



Sustainable French Linen
环保法国亚麻



Cool Touch
清爽手感



Moisture Management
湿气管理



Visual Development
视觉创新

| Garment Care Label Recommendations 建议成衣洗水标 | | | | |
|--|-----------------------|-----------------------------|--------------------------|-------------------------------|
| | | | | |
| Machine Wash Cold 30°C或冷水机洗 | Do Not Bleach 不可漂白 | Do Not Tumble Dry 不可转笼烘干 | Iron on Low Heat 低温熨烫 | Dry Clean if Preferred 可干洗 |

Other Recommendation 其它建议：

- Dry Flat in Shade 于阴凉处平铺晾干
- Wash with Mesh Bag 使用洗衣袋洗涤

| Remarks 备注 | |
|---------------------------------|---|
| LAB DIP AVAILABILITY 小样提供 | Lap dip available for customized top dye heather colors 小样可提供客人指定的色纺色 |
| WEIGHT ALLOWANCE 重量偏差 | All yarns are subject to (+/-) 2% moisture regain allowance in weight 产品在公定回潮率下的重量存在(+/-)2%的偏差 |
| FIBER CONTENT TOLERANCE 成分波动 | According to AATCC 20A-2000 method, where two or more fibers are in the product, a tolerance of (+/-) 3% is allowed 根据纤维定量分析AATCC 20A-2000测试，当产品含有两种或以上的成分，允许有(+/-)3%的波动 |
| COLOR TOLERANCE 颜色偏差 | Accept yarn appearance and lot difference as natural characteristics 纱线外观及批次差异源于亚麻纤维的天然特性 |



ISO9001
ISO14001

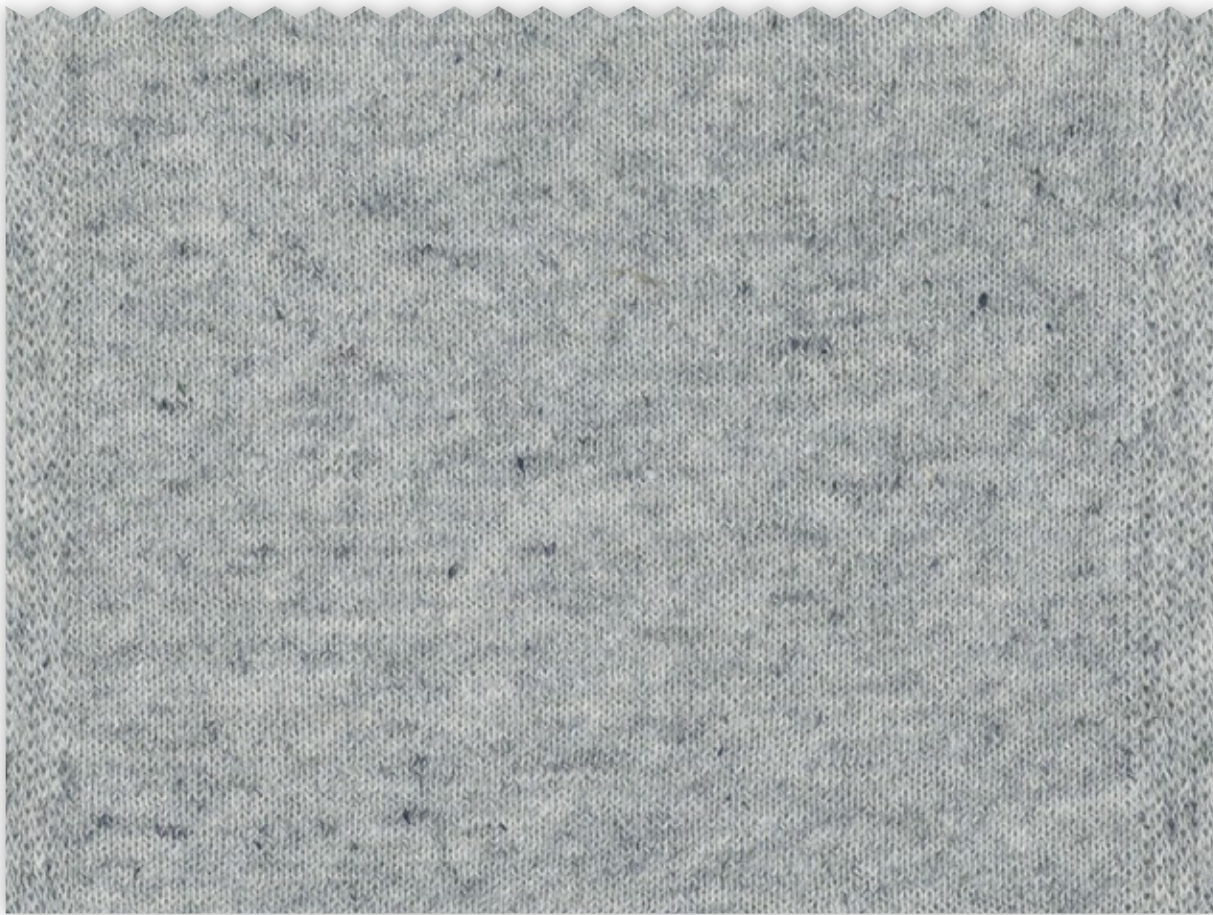




Star Clouds Linen Heather 亚麻·星云纱

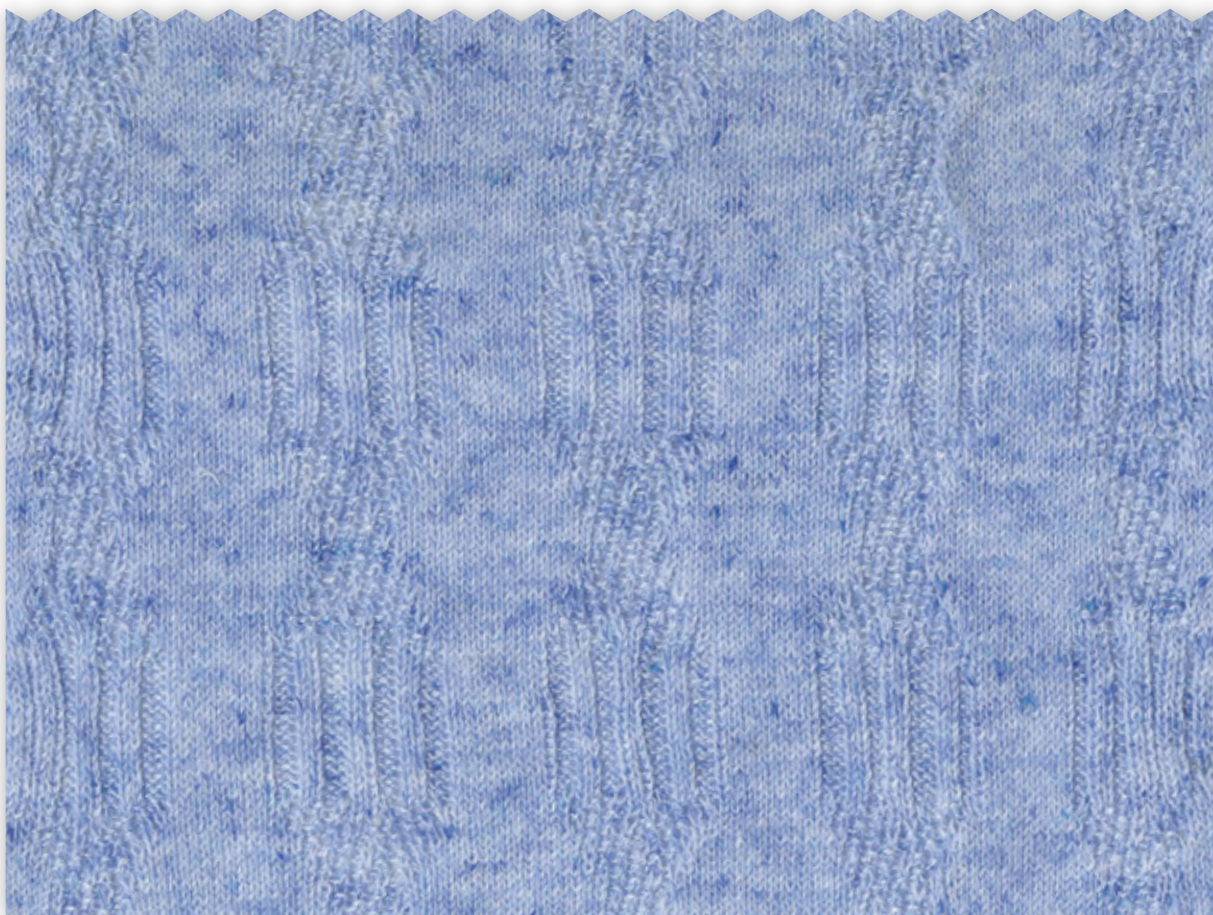
70% Polyester 涤纶 30% Linen 亚麻

16s/2



Yarn Count 纱支: 16s/2
Color Code 色号: VE2QP-B5140F-S

Yarn Lot 纱批: H225-108774
Gauge 针种: 12gg, 1end



Art NO. 花型编码: 250546
Yarn Count 纱支: 16s/2
Color Code 色号: VE2QP-B1245F-S

Yarn Lot 纱批: H225-Z108729
Gauge 针种: 12gg, 1end



Star Clouds Linen Heather 亚麻·星云纱

70% Polyester 涤纶 30% Linen 亚麻

16s/2

V1

V2

A



Color Code 色号: VE2QP213950F-S
Yarn Lot 纱批: H225-108814

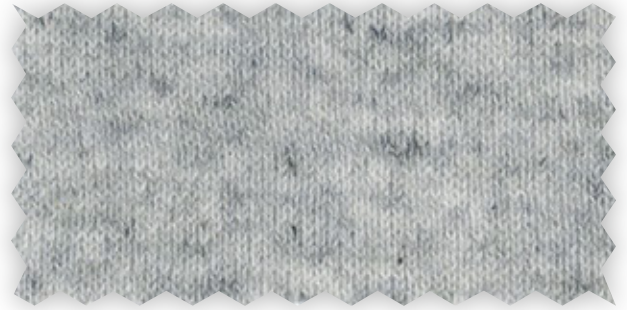


Color Code 色号: VE2QP116352F-S
Yarn Lot 纱批: H225-108853

B



Color Code 色号: VE2QP116354F-S
Yarn Lot 纱批: HL225-108917

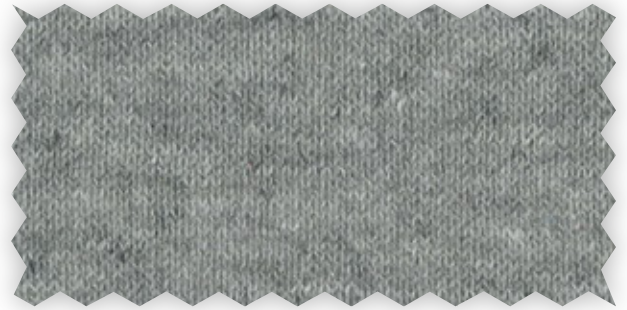


Color Code 色号: VE2QP-B5140F-S
Yarn Lot 纱批: H225-108774

C

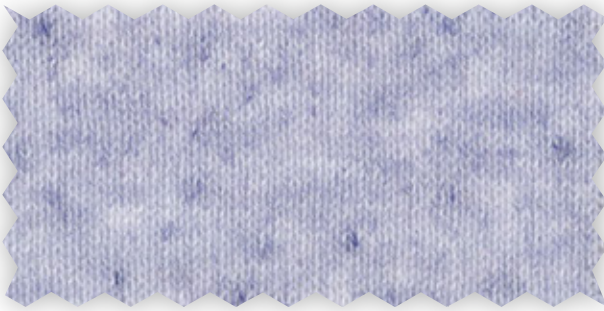


Color Code 色号: VE2QP116386F-S
Yarn Lot 纱批: H225-108851



Color Code 色号: VE2QP518854F-S
Yarn Lot 纱批: H225-108776

D



Color Code 色号: VE2QP614079F-S
Yarn Lot 纱批: HL225-108696



Color Code 色号: VE2QP518857F-S
Yarn Lot 纱批: H225-Z108812

E



Color Code 色号: VE2QP-B1245F-S
Yarn Lot 纱批: H225-Z108729



Color Code 色号: VE2QP116382F-S
Yarn Lot 纱批: H225-Z108815



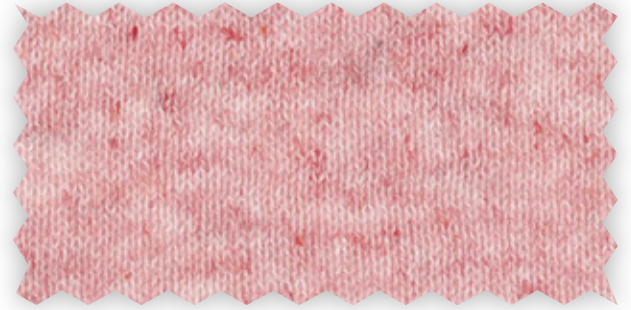
V3

V4

A



Color Code 色号: VE2QP416994F-S
Yarn Lot 纱批: H225-108730



Color Code 色号: VE2QP315257F-S
Yarn Lot 纱批: H225-108852

B



Color Code 色号: VE2QP417765F-S
Yarn Lot 纱批: H225-108883



Color Code 色号: VE2QP315282F-S
Yarn Lot 纱批: H225-108931

C



Color Code 色号: VE2QP417804F-S
Yarn Lot 纱批: H225-108775



Color Code 色号: VE2QP315279F-S
Yarn Lot 纱批: H225-Z108886

D



Color Code 色号: VE2QP213953F-S
Yarn Lot 纱批: H225-Z108813



Color Code 色号: VE2QP315287F-S
Yarn Lot 纱批: H225-Z108855

E



Color Code 色号: VE2QP518862F-S
Yarn Lot 纱批: H225-Z108884



Color Code 色号: VE2QP417808F-S
Yarn Lot 纱批: H225-Z108887